

'The Cathedral of Sewage' pre-WWII motor replacement

It is not every day that you come across a set of 80-year old electric motors, 2m in diameter, that are housed in a beautiful 150 year old Victorian building. For the team at G&G Engineering in Barnsley, the refurbishment project at Abbey Mills Pumping Station was a real eye-opener.



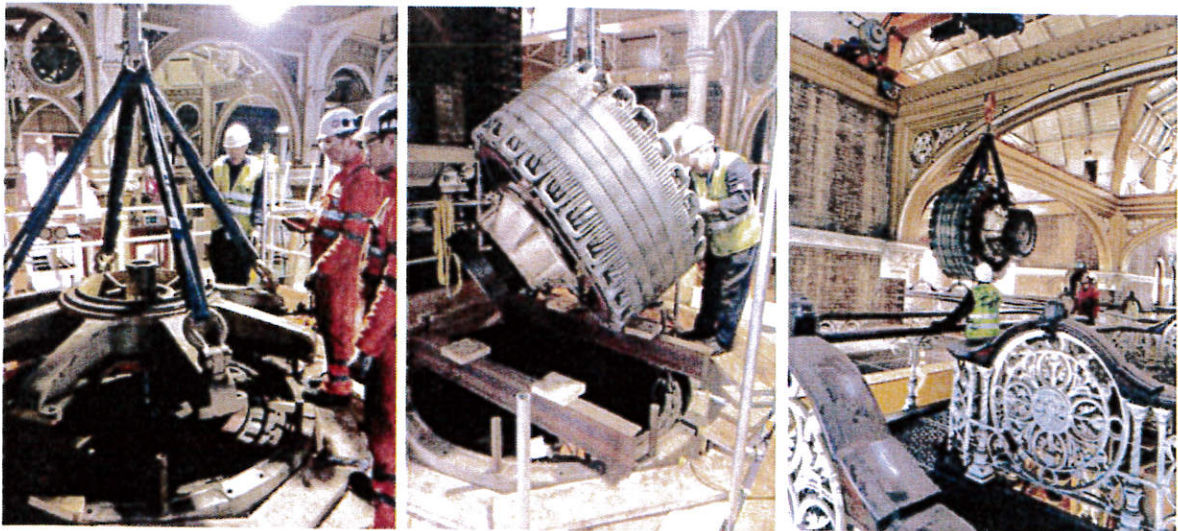
Abbey Mills is a sewage pumping station located in London E15. It was designed in an elaborate Byzantine style and hence for centuries has been nicknamed 'The Cathedral of Sewage'.

The electric motors drive massive pumps to raise the sewage in the London sewerage system between the two Low Level Sewers and the Northern Outfall Sewer, built in the 1860s to carry the increasing amount of sewage produced in London away from the centre of the city.

Two Moorish styled chimneys, unused since steam power had been replaced by electric motors in 1933, were demolished in 1941 as it was feared that a bomb strike from German bombs might topple them on to the pumping station.

G&G Engineering Mechanical Services Ltd. was asked to undertake the high-profiled project in London because of their vast experience at removing, refurbishing and re-installing heavy and complex items, like these engineering wonders.

Mick Grain, Managing Director at G&G Engineering said, "We were engaged by our client to remove several large electric motors which have not been moved since 1933. The tight constraints of the Grade II listed building gave us a few lifting challenges, but eventually after nearly a week of precise intricate operation, they came out".



The electric motor replacement is part of a major upgrade project at Abbey Mills, which is set to ensure London's sewage continues to keep flowing for the next century.